

Historic music in historic churches – early and Baroque music for voices and period instruments

THE
Suffolk Villages Festival



August 23 – 26 2019

Artistic Director: Peter Holman MBE



HADLEIGH STOKES BY NAYLAND
BOXFORD SUDBURY

The Anthony King Memorial Fund

Professor Anthony King (1934-2017) was Chairman of the Suffolk Villages Festival Committee from 2002 until his death. In his memory we have set up a fund to support SVF work in an area particularly dear to his heart: English music of the seventeenth and eighteenth centuries. Our performances of *Arne's Alfred* in 2017 and *Eccles's Semele* in 2018 were the first two supported by the fund. In this year's festival it is supporting *Boyce's Solomon* on Saturday and the Linley concert on Monday.

The SVF Monteverdi Project Fund

This Fund was set up in 2016 with the aim of raising the means to perform all of Monteverdi's major works in a five-year cycle. We began with *The Coronation of Poppea* in 2016, followed by the *1610 Vespers* in 2017 and the ballets in 2018. *The Return of Ulysses* is being performed this year, with *Orfeo* planned for 2020.

If you would like to contribute to either fund, please contact our Administrator, Louise Jameson: louise@suffolkvillagesfestival.com or 01206 366603



SVF creative lives

At the concert in Stoke by Nayland on Saturday 24 August there will be an exhibition reflecting the creative activities of the community associated with the Festival, which includes instrument makers, furniture makers, photographers and authors.

cover illustration:
Pinturricchio, *Penelope and her Suitors* (1509)
London National Gallery

A message from the Artistic Director

Welcome to the 2019 Festival. This year we reach *The Return of Ulysses* in our Monteverdi project, on Friday 23 August. I'm greatly looking forward to it since it's the only major Monteverdi work I haven't directed before; it's a compelling drama with superb music; and we have an excellent cast, led by Charles Daniels and Helen Charlston. A theme this year is early keyboard instruments: on Sunday John Irving plays his fine copy of an Anton Walter fortepiano (Mozart owned one) in a recital with the clarinettist Jane Booth, and on Monday morning Terence Charlston (Helen's father) talks about the clavichord and its music. SVF has never had a clavichord recital before, and his lecture recital about this fascinating instrument will be worth waiting for. Eighteenth century English music is another theme: Steven Devine directs William Boyce's ravishing *Solomon* on Saturday, paired with Handel's stirring 'Zadok the priest', while on Monday I'm directing a concert of the wonderful music Mozart's friend Thomas Linley wrote at the end of his short life. These concerts are supported by the Anthony King Memorial Fund; I only wish Tony was here to hear them.



Peter Holman

Now in its 32nd year, the Suffolk Villages Festival brings high-quality performances of early music to rural East Anglia. Its principal venues are the fine historic wool churches of Stoke by Nayland, Boxford, Nayland, Hadleigh and Sudbury, situated to the north of the River Stour and Dedham Vale.

The area is easily reached by road from London and the Suffolk coast via the A12, and from the Midlands via the A14. The nearest mainline railway stations are Colchester and Ipswich. The website www.visitsuffolk.com lists local accommodation. Alternatively, please contact the Tourist Information Centre: The Library, Market Hill, Sudbury, CO10 2EN. Telephone: 01787 881320.

The Suffolk Villages Festival
Registered Charity No. 1102789
119 Maldon Road
Colchester CO3 3AX
01206 366603

www.suffolkvillagesfestival.com
info@suffolkvillagesfestival.com
[@suffolkvf](https://www.facebook.com/suffolkvf)

Friday 23 August at 7pm
St Mary's Church, Hadleigh IP7 5DT

Monteverdi
The Return of Ulysses (1640)

libretto by Giacomo Badoaro
performing edition by Peter Holman,
concert performance sung in Italian

Minerva	Claire Coleman <i>soprano</i>
Penelope	Helen Charlston <i>mezzo-soprano</i>
Ulisse	Charles Daniels <i>tenor</i>
Eumete	Daniel Auchincloss <i>tenor</i>
Telemaco	William Wallace <i>tenor</i>

The John Jenkins Consort
directed by Peter Holman *harpsichord*



After ten-years' wandering from Troy, Ulysses comes home to Ithaca to find his wife Penelope besieged by a trio of villainous suitors. Vanquishing them with assistance from the goddess Minerva, he recovers his kingdom and is reconciled to Penelope. Monteverdi clothes this epic Homeric tale of virtue and constancy rewarded with music of extraordinary eloquence, tender, heroic and passionate by turns.

The large cast is headed by the distinguished tenor Charles Daniels, who gave a superb recital with Fred Jacobs at the 2018 Festival, and rising star Helen Charlston, who appears regularly at SVF. It also includes advanced singing students from UK conservatoires and universities, mentored in the specialist techniques required for Monteverdi by our chairman Stephen Varcoe with Fred Jacobs and Peter Holman.

The performance will end at approximately 10pm

Concert supported by donors to The Monteverdi Project Fund

Tickets £20 (reserved), £14 (unreserved)
half-price for full-time students; see back cover for booking information

Friday 23 August at 5.45pm (free admission to concert ticket-holders)
United Reformed Church, The Market Place, Hadleigh IP7 5DL

Classical gods (and Classical unities?) in *Il ritorno d'Ulisse*
A talk by Professor Richard Andrews, University of Leeds

pre-concert
talk



Saturday 24 August at 6.30pm
St Mary's Church, Stoke by Nayland CO6 4QU

William Boyce *Solomon* (1742)
Handel *Zadok the priest*
Let thy hand

Philippa Hyde *soprano*
William Wallace *tenor*

Psalmody
Essex Baroque Orchestra
directed by Steven Devine *harpsichord*

Solomon, with words largely drawn from the Song of Songs, was lastingly popular in the eighteenth century for its rapturous depictions of love through the seasons. Boyce's delightful score is full of English melodious charm, as in 'Softly rise, O southern breeze', an exquisite sound picture of a summer's day, painted with a bassoon solo and shimmering strings. In 1762 John Potter exclaimed that *Solomon* 'stares the Italians in the face, and asks them, with what justice they can claim the art of beautiful modulation alone?'

We complement *Solomon* with two of Handel's famous coronation anthems. 'Zadok the priest' has been used at every coronation since 1727 and its text, the Biblical account of Zadok anointing Solomon king, was first used for King Edgar in 973.

SVF favourite Philippa Hyde is joined by the exciting young tenor William Wallace, winner of the 2016 Handel Singing Competition. Steven Devine is a passionate advocate for *Solomon* and has conducted it in London and Germany.

Concert supported by donors to the Anthony King Memorial Fund

Tickets £20 (reserved), £14 (unreserved)

half-price for full-time students; see back cover for booking information

Saturday 24 August at 5.15pm (free admission to concert ticket-holders)
St Mary's Church, Stoke by Nayland CO6 4QU

William Boyce and his musical world
A talk by Peter Holman, Artistic Director

pre-concert
talk

Sunday 25 August at 6.30pm
St Mary's Church, Boxford CO10 5DU

Ensemble DeNOTE

Jane Booth *clarinet*
John Irving *fortepiano*

The Classical Clarinet Mozart, Danzi & Beethoven



A superb programme of music for clarinet and piano from around 1800, played on period instruments. The B flat sonata by Franz Danzi, friend of Beethoven and Weber, is a large-scale virtuoso work, while Mozart's Grande Sonate is a fascinating contemporary reimagining of the Clarinet Quintet in A major, played on the basset clarinet as the composer originally intended. John Irving and his fortepiano (after Anton Walter, who made an instrument for Mozart) breathe new life into Beethoven's Sonata Pathétique in C minor and Mozart's Fantasia in D minor K397.

Jane Booth is a leading exponent of early clarinets, playing all over the world with period-instrument ensembles. She now concentrates on solo and chamber music performance with Ensemble DeNOTE. She is also an Executive Coach, leading the Coaching Associates at Guildhall Innovation. John Irving specialises in playing eighteenth-century music on contemporary keyboard instruments. He teaches at The Guildhall School of Music & Drama.

'Superbly inflected performances...gorgeously subtle colouring'

Sir Nicholas Kenyon, *The Observer*

**Tickets £18 (reserved), £12 (unreserved)
half-price for full-time students;
see back cover for booking information**

**Festival Season Ticket
top-price tickets
for all five concerts
£84**



Monday 26 August at 11am
Quaker Meeting House
22 Friars Street, Sudbury
CO10 2AA

A Still Small Voice
The natural history
of the clavichord

Terence Charlston

The clavichord's unique mechanism, with a direct connection between finger and string, makes it the only truly expressive keyboard instrument, even allowing the player a subtle form of vibrato. Sudbury's historic Quaker Meeting House is an atmospheric, quiet space for the favourite instrument of composers and connoisseurs for more than three centuries.

In this entertaining and informative lecture recital Terence Charlston, one of Britain's leading early keyboard exponents, explores music by Byrd, Froberger, J.S. Bach and C.P.E. Bach on two contrasted clavichords. He is joined by Julian Perkins for the finale, Beethoven's four-hand Sonata in D major, op. 6 (1797).

'Clavichords are notoriously difficult to play well. Terence Charlston's performance is miraculous, with everything perfectly in place; yet it does not sound cautious ... one of the best clavichord albums I have ever heard.'

American Record Guide

Tickets £15, £12; half-price for full-time students
see back cover for booking information

Festival Programme

A programme covering all Festival events will be on sale from 23 August at £7. **You can order your copy in advance for £6** when you place your ticket order (you will be sent a voucher which can be exchanged for a programme at or after the first concert). See *back cover*.

Monday 26 August
Gainsborough's House, Sudbury CO10 2EU

Gainsborough and the Linley Family

An afternoon of events 2–5pm

- 2pm ***Thomas Gainsborough: the Linley family and music at Gainsborough's House***
a talk by Mark Bills, Executive Director of Gainsborough's House
- 2.45pm ***The Linley Family: New Discoveries***
A talk by Dr William Davies of Southampton University
- 3.30pm A chance to view the Gainsborough's House exhibition
Tea will be available
- 4pm ***The Linley Sisters and Eighteenth-century Vocal Culture***
A talk by Stephen Varcoe, Suffolk Villages Festival Chairman



This afternoon of events is the latest instalment of our fruitful collaboration with Gainsborough's House. Thomas Gainsborough was an accomplished musician; he painted many of the eminent musicians of his day, and became close friends with some of them, including John Christian Bach, Charles Frederick Abel and the Linley family. He painted many of the Linleys, including Thomas senior, musical director at Drury Lane, his daughters Elizabeth and Mary, both leading

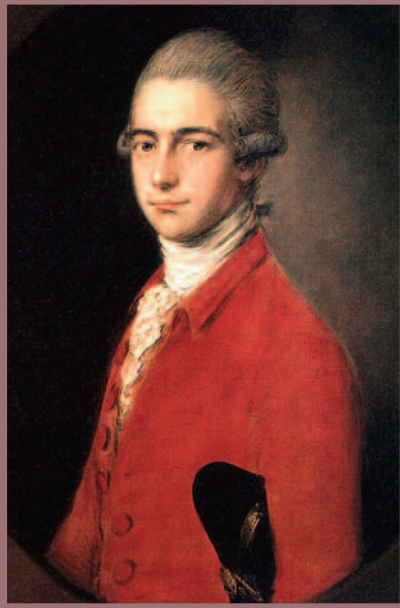
sopranos of the day, and his son Thomas junior, violinist and composer, whose superb music is the subject of this evening's concert.

Tickets £10; half-price for full-time students

Please note that this event is NOT included in the Festival Season Ticket

Festival Programme

A programme covering all Festival events will be on sale from 23 August at £7. **You can order your copy in advance for £6** when you place your ticket order (you will be sent a voucher which can be exchanged for a programme at or after the first concert). *See back cover.*



Monday 26 August at 6.30pm
St Peters, Sudbury CO10 2EH

The English Mozart A Portrait of Thomas Linley

Philippa Hyde *soprano*
Claire Coleman *soprano*
Simon Standage *violin*

Psalmody
Essex Baroque Orchestra

directed by Peter Holman *harpsichord*

Thomas Linley (1756-1778) was a violin prodigy and England's most promising young composer until his life was cruelly cut short by a boating accident at the age of 22. Mozart, his friend and exact contemporary, thought him 'a true genius', who 'had he lived, would have been one of the greatest ornaments of the musical world.'

We celebrate Linley with a cross section of his finest music. The magnificent short oratorio *The Song of Moses* contrasts stirring contrapuntal choruses with up-to-the-minute virtuoso solos written for his sisters. The dramatic storm chorus for *The Tempest* was written for Sheridan's Drury Lane production in 1777, while the equally innovative solo cantata 'Upon the mountain's solitary height' seems to be the first English setting of Goethe.

To play Linley's fine Mozartian Violin Concerto in F (and to lead our orchestra this year) we welcome Simon Standage, one of Britain's most distinguished violinists specialising in period instruments.

Tickets £20 (reserved), £14 (unreserved)
half-price for full-time students;
see back cover for booking information

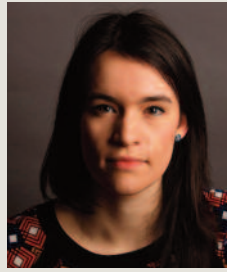
Festival Season Ticket
top-price tickets
for all five concerts
£84



Daniel Auchincloss
tenor



Jane Booth
clarinet



Helen Charlston
mezzo soprano



Terence Charlston
clavichord



Clare Coleman
soprano



Charles Daniels
tenor



Peter Holman
director



Philippa Hyde
soprano



Steven Devine
harpsichord



John Irving
fortepiano



Simon Standage
violin



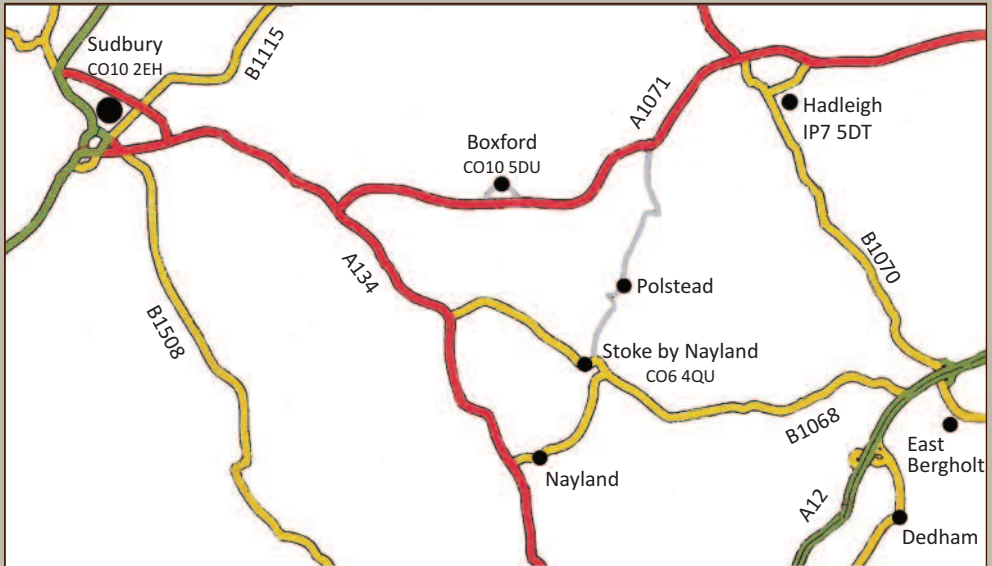
William Wallace
tenor

Essex Baroque Orchestra, founded by Peter Holman, has been the resident orchestra of the Festival for more than 30 years. Among the most accomplished groups of its type performing on period instruments, it is made up of professional Baroque specialists, music teachers and experienced amateurs.

The John Jenkins Consort, formed in 2013 and named after East Anglia's greatest seventeenth-century composer, unites leading instrumentalists associated with the Festival, playing Renaissance and Baroque strings and continuo instruments. It is the resident ensemble for the Monteverdi Project.

Psalmody, founded in 1996, is the resident choir of the Suffolk Villages Festival, made up of accomplished and experienced choral singers, some of whom take solos when required. It cultivates a forthright, open and word-centered style, suitable for Baroque music.

Our venues



CO10 5DU	Boxford (St Mary's)
IP7 5DT	Hadleigh (St Mary's)
CO6 4QU	Stoke by Nayland (St Mary's)
CO10 2EU	Sudbury (Gainsborough's House)
CO10 2EH	Sudbury (St Peter's)
CO10 2AA	Sudbury (Quaker Meeting House)

Parking: please follow signs to the Suffolk Villages Festival car park in Stoke by Nayland. Public car parks are clearly signposted in Hadleigh and Sudbury; there is on-street parking in Boxford.

Toilet facilities are available at or near all venues

Festival Programme

A programme covering all Festival events will be on sale from 23 August at £7. **You can order your copy in advance for £6** when you place your ticket order (you will be sent a voucher which can be exchanged for a programme at or after the first concert). *See back cover.*

BOOKING INFORMATION

Booking opens on 10 June to Supporters (Friends, Patrons and Benefactors) of Suffolk Villages Festival, and on 17 June to the general public.

online

Please visit the website at www.suffolkvillagesfestival.com to order your tickets and pay online via PayPal (please note that you do not need to have a PayPal account in order to do this – you can simply pay using your credit or debit card).

by telephone

Please contact the box office on 01206 366603. We can take payments over the phone via Visa, Visa Electron, Mastercard and Maestro.

by post

Please write to SVF Box Office, 119 Maldon Road, Colchester, CO3 3AX enclosing a stamped, addressed envelope. If ordering ten or more tickets, please use a large letter stamp. Cheques should be made payable to Suffolk Villages Festival.

postage & packing

We will send your tickets to you, if time permits. If this is the case then a charge of £1 will apply, to cover the cost of post & packing.

Festival Season ticket

£84 for top-price seats for all five concerts, a saving of around 10%. Please note that the Gainsborough House event is not included in the season ticket.

Festival programme

Order with your tickets, at £6. You will be sent a voucher which may be exchanged for a programme at any event.

concessions

Half-price tickets are available to full-time students.

refunds

We regret that refunds can only be given if the concert is sold out and we are able to sell on the ticket.

seating

Top-price tickets for the evening concerts are in numbered seats and have views unobstructed by pillars. All other tickets are unreserved and may have an obstructed view.

Every effort will be made to adhere to the advertised programme but please note that the organisers reserve the right to amend or cancel any part.

general enquiries

Please contact the Suffolk Villages Festival Office for general information.

BOX OFFICE

Suffolk Villages Festival
119 Maldon Road
Colchester CO3 3AX
01206 366603
box@suffolkvillagesfestival.com
www.suffolkvillagesfestival.com

