

Historic music in historic churches – early and Baroque music for voices and period instruments

THE
Suffolk Villages Festival



Autumn Concerts 2016

Artistic Director: Peter Holman MBE



Sebastian Comberti

BOXFORD SADBURY DEDHAM

Sebastian Comberti *violoncello*

Katharine Durran *Broadwood pianoforte*

Beethoven: Sonata in A major op. 69 (1808)

Mendelssohn: Sonata in D major op. 58 (1843)

Brahms: Sonata in F major op. 99 (1886)

Sunday 6 November
at 6pm
St Mary's Church
Boxford CO10 5DU

Sebastian Comberti makes a welcome return to SVF with a programme bringing together three of the greatest 19th-century sonatas for violoncello and piano, written roughly 40 years apart. Sebastian is one of the world's leading cellists specialising in historically informed performance, and he is partnered here by the distinguished pianist Katherine Durran, well known for her work accompanying famous singers and instrumentalists. She plays the historic and beautiful nineteenth-century Broadwood piano at Boxford, played by David Owen Norris, Steven Devine and others for SVF's forays into 19th-century music.

Tickets £18 (reserved), £12 (unreserved)

In association with Gainsborough's House

Thursday 17 November
at 7 pm

Abel: Polish discoveries

Mark Caudle *viola da gamba*

Teresa Kamińska *violoncello*

The Quaker Meeting House
Sudbury CO10 2AA

This special concert, promoted by Gainsborough's House in association with SVF, celebrates Sonia Wronkowska's extraordinary discovery of at least 25 unknown viola da gamba sonatas by Carl Friedrich Abel (1723-87) from the collection of Count Joachim Carl von Maltzan (1733-1817), now at the University of Poznań. Maltzan was Prussian ambassador in London from 1776 to 1782 and one of the circle of pupils and admirers of Abel that also included Thomas Gainsborough. The new sonatas are mostly mature, sophisticated and virtuoso works, composed for Abel himself to play in his celebrated London concerts, in contrast to those known hitherto, which are nearly all undemanding teaching pieces. Abel was the greatest viola da gamba player of his day, an elegant and accomplished composer, to be ranked with his friends Johann Christian Bach and the young Mozart.

Mark Caudle divides his time as a viola da gamba virtuoso between East Anglia and Poland, and has appeared at SVF many times. He and the Polish cellist Teresa Kamińska will give the world premiere of some of the new Abel sonatas in London shortly before our concert.

Tickets £20 (unreserved) from Gainsborough's House – see the back page of this brochure.

Pre-concert talks 5.30-6.30pm at Gainsborough's House, Sudbury

Mark Bills *Gainsborough and Abel*

Peter Holman *Abel and the Viola da Gamba*

Sonia Wronkowska *An Exciting Discovery*

Charpentier: Midnight Mass

with Christmas music by Michael Praetorius, Cererols
Stradella, Lalande, J.S. Bach, Caleb Ashworth and John Foster

Sunday 11 December
at 6pm
St Mary's Church
Dedham CO7 6DE

Claire Coleman *soprano*
Psalmody, with a childrens' choir from local schools
The John Jenkins Consort
directed by Peter Holman

Our traditional December concert this year focuses on one of the greatest and best loved Christmas works, Marc-Antoine Charpentier's *Messe du minuit pour Noël*, apparently written around 1690 for Midnight Mass at the Jesuit church in Paris, Saint-Louis le Grand. It owes its distinctive character to Charpentier's clever incorporation of a number of beautiful French noels or Christmas carols.

In the second half we explore Christmas music from early 17th-century Germany and Spain to 19th-century Yorkshire, ending with John Foster's famous choral and orchestral setting of 'While shepherds watched their flocks by night', published in 1822 and still sung in the pubs around Sheffield. As in previous years, Psalmody and the John Jenkins Consort are joined by a choir of children drawn from local schools, one of our developing educational initiatives.

Tickets £18 (reserved), £12 (unreserved)



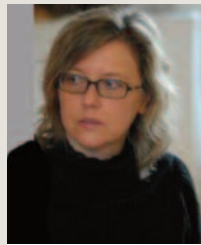
Sebastian Comberti



Katharine Durran



Mark Caudle



Teresa Kamińska



Claire Coleman

Now in its 29th year, the Suffolk Villages Festival brings high-quality performances of early music to rural East Anglia. Its principal venues are the fine historic wool churches of Boxford, Stoke by Nayland, Nayland and Sudbury, to the north of the River Stour and Dedham Vale.

The area is easily reached by road from London and the Suffolk Coast via the A12, and from the Midlands via the A14. Colchester and Ipswich are the nearest mainline railway stations. Local accommodation is listed at www.southandheartofsuffolk.org.uk Alternatively, please contact the Tourist Information Centre: The Library, Market Hill, Sudbury, CO10 2EN. Telephone: 01787 881320.

The Suffolk Villages Festival
Registered Charity No. 1102789
119 Maldon Road
Colchester
CO3 3AX
01206 366603

www.suffolkvillagesfestival.com
info@suffolkvillagesfestival.com
[@suffolkvf](https://www.facebook.com/suffolkvf)



SVF BOOKING INFORMATION

Booking opens on 19 September to Supporters (Friends, Patrons and Benefactors) of SVF, and on 26 September to the general public.

By post: please write to SVF Box Office (address below) enclosing a stamped, addressed envelope. If ordering ten or more tickets, please use a large letter stamp. Cheques should be made payable to 'Suffolk Villages Festival'.

Online: please visit the website at www.suffolkvillagesfestival.com to order your tickets and pay online via PayPal (please note that you do not need to have a PayPal account in order to do this – you can simply pay using your credit or debit card).

By telephone: please contact the Box Office on 01206 366603. We are now able to take payments over the phone via Visa, Visa Electron, Mastercard and Maestro.

Card payment: please note that a surcharge of £1 will apply to each transaction made online or by telephone; this covers posting your tickets if time permits.

Autumn Series Season ticket: £32 for top-price seats for the concerts on 6 November and 11 December, a saving of 10%.

Concessions: half-price tickets are available to full-time students.

Refunds: We regret that refunds can only be given if the concert is sold out and we are able to sell on the ticket.

Seating: Top-price tickets are in numbered seats and have views unobstructed by pillars. All other tickets are unreserved and may have an obstructed view.

Every effort will be made to adhere to the advertised programme but please note that the organisers reserve the right to amend or cancel any part.

General enquiries: please contact the Suffolk Villages Festival Office for general information.

BOX OFFICE

Suffolk Villages Festival
119 Maldon Road
Colchester
CO3 3AX

01206 366603
box@suffolkvillagesfestival.com
www.suffolkvillagesfestival.com

Registered Charity number 1102789

Tickets for Abel: Polish discoveries

£20 unreserved (half-price to full-time students) available from Gainsborough's House
46 Gainsborough Street, Sudbury CO10 2EU
01787 372958
mail@gainsborough.org

Admission to the pre-concert talks is free for concert ticket-holders, but places must be booked in advance.



Registered Charity number 214046