

Historic music in historic churches – early and Baroque music for voices and period instruments

THE
Suffolk Villages Festival



Spring Concerts 2016

Artistic Director: Peter Holman MBE



Nayland & Sudbury



Oh! The Sweet Delights of Love

Sunday 14 February 2016
Nayland Village Hall
at 6pm

Claire Tomlin & Emma Bishton *soprano*
Louise Jameson *bass violin*
Peter Holman *harpsichord*

We celebrate St Valentine's Day with a delightful programme on the theme of love in its various aspects, sacred and secular and from first rapture to profound grief. Baroque composers revelled in the bright and sensuous sonorities of two sopranos with continuo, producing masterpieces such as Marc-Antoine Charpentier's sensuous 'Spring' motet setting lines from the Song of Solomon, Henry Purcell's Elegy on the Death of Queen Mary and François Couperin's superb setting of the Magnificat.

In the second half we lower the tone with frank and witty explorations of secular love, by Monteverdi, Charpentier and Couperin, ending with duets from Purcell's *King Arthur* and *Dioclesian*.

Tickets £18 (reserved), £12 (unreserved), reserved seats for two concerts £32



Peter Holman

Claire Tomlin

Emma Bishton

Louise Jameson

www.suffolkvillagesfestival.com
info@suffolkvillagesfestival.com
[@suffolkvf](https://twitter.com/suffolkvf)



Handel: *Acis and Galatea*
Purcell: *The Masque of Cupid and Bacchus*

Monday 30 May 2016
St Peter's, Sudbury
at 6pm

Claire Tomlin & Philippa Hyde *soprano*
Richard Edgar-Wilson *tenor*
Giles Davies *bass*

Psalmody, Essex Baroque Orchestra
directed by Peter Holman



Acis and Galatea is one of Handel's most memorable and popular English theatrical works, a dramatic and moving story of pastoral love between the shepherd Acis and the nymph Galatea, threatened and finally destroyed by the jealous monster Polyphemus.

We perform the rarely heard revised version of the work, as performed by Handel in London in 1739 and 1740 and in Dublin in 1742. *The Masque of Cupid and Bacchus*, written by Henry Purcell in 1695 for Shakespeare's play *Timon of Athens*, is a captivating curtain-raiser.

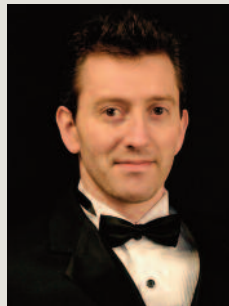
Tickets £18 (reserved), £12 (unreserved), reserved seats for two concerts £32



Philippa Hyde



Richard Edgar-Wilson



Giles Davies



Claire Tomlin

Dates for your Diary

26 – 29 August 2016

The Suffolk Villages Festival 2016

BOOKING INFORMATION

BOX OFFICE

The National Centre for Early Music
St Margaret's Church, Walmgate, York YO1 9TL
telephone: 01904 651 485
boxoffice@ncem.co.uk www.ncem.co.uk

Booking opens on 4 January to Supporters (Friends, Patrons and Benefactors) of SVF, and on 11 January to the general public.

By post: please write to NCEM enclosing a stamped, addressed envelope. If ordering ten or more tickets, please use a large-letter stamp. Cheques should be made payable to the National Centre for Early Music.

Online: please visit the NCEM website and use the secure online booking service. To book tickets you will need to register with a username and password.

By telephone: please telephone NCEM on weekdays 9am – 5pm.

Card payment: tickets may be booked by Visa, Visa Electron, Mastercard and Maestro. Please note that a charge of £1 will apply for each transaction made online or by telephone. This includes postage of your tickets if time permits.

Seating: top-price tickets are for numbered seats with views unobstructed by pillars. All other tickets are unreserved and some have a partly obstructed view.

Season tickets: reserved seats for both concerts at £32 when booking by telephone or post; this offer is not available online.

Concessions: full-time students are eligible for half-price tickets.

Reservations: tickets must be paid for within three working days of reservation and by 5pm on the Wednesday before each concert. Any remaining tickets will be sold at the venue prior to the performance.

Refunds: we regret that refunds can be given only if the concert is sold out and the ticket can be re-sold; there will be a 10% administration charge. Every effort will be made to adhere to the advertised programme but please note that the organisers reserve the right to amend or cancel any part.

GENERAL ENQUIRIES

The Suffolk Villages Festival
119 Maldon Road
Colchester CO3 3AX
telephone 01206 366603

Supporters of the Suffolk Villages Festival

Supporters of the Suffolk Villages Festival make annual donations that are the lifeline of SVF. Supporters have priority booking for all concerts and events staged by SVF during the year. They receive a regular newsletter and are invited to special Supporters' events. All Patrons and Benefactors will be listed in SVF programmes unless anonymity is requested.

If you would like to become a Supporter, please visit our website or contact the SVF office.

Friends: £25-£99 single; £40-£99 joint
Patrons: £100-£299
Benefactors: £300 or more